

adsilent App Manual

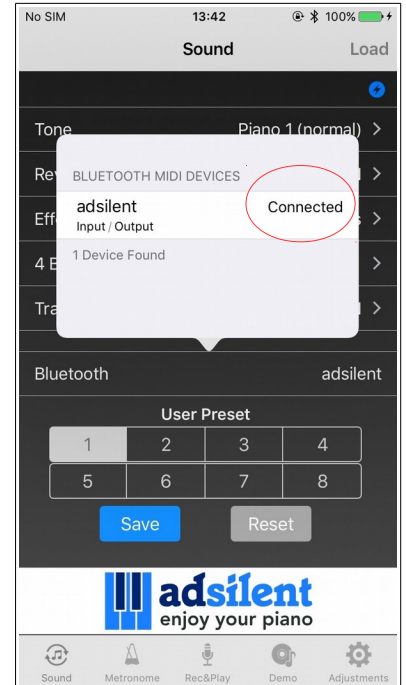
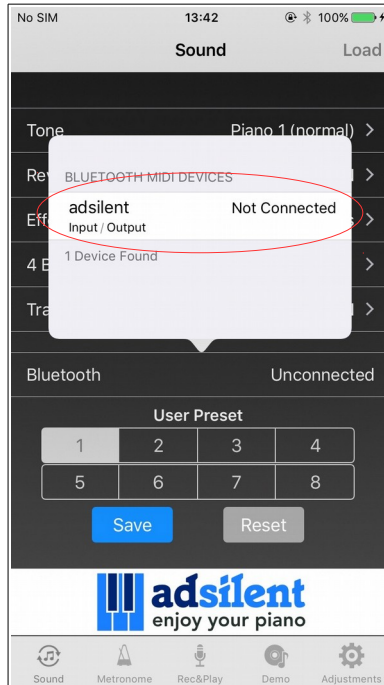
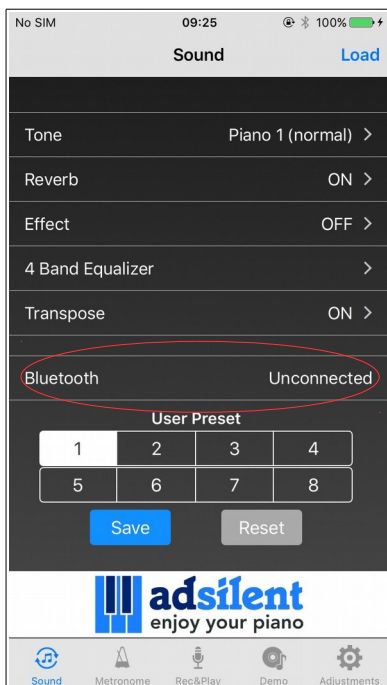
Thank you for choosing A. Duetz Handel & Service ! This manual explains how to set up the adsilent app, and details how to use its many features.

1. How to connect

Bluetooth connection



- 1) On your iOS device, go to Settings > Bluetooth and make sure that Bluetooth is on.
- 2) Power on control-box and start adsilent app.
- 3) Tap Bluetooth.
- 4) Tap adsilent.
- 5) Change to connected.

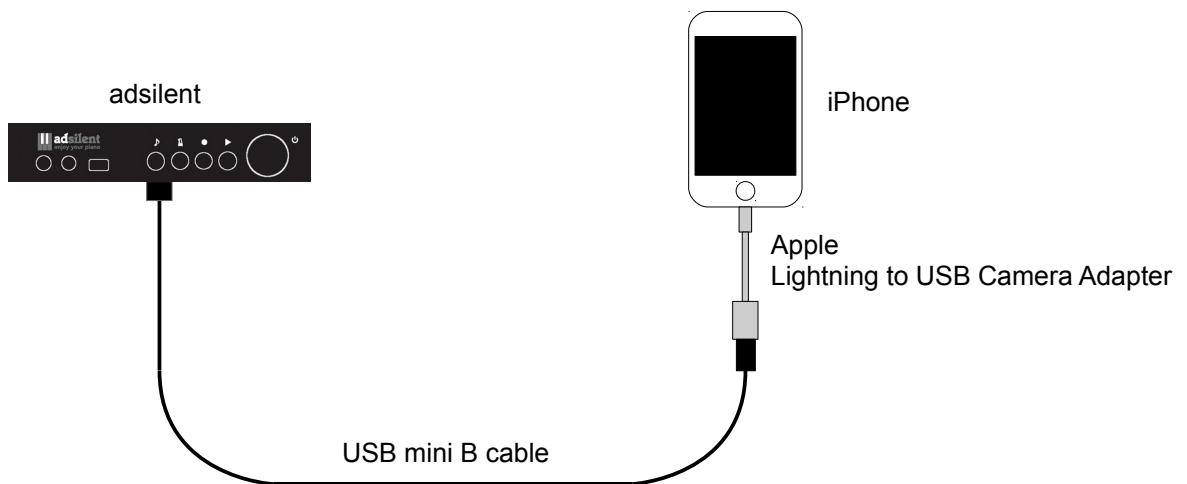


USB connection

The following accessories are required to connect and use a adsilent system with an iPhone:

- Apple Lightning to USB Camera Adapter
- USB mini B cable

Please connect your adsilent system to your iPhone as shown below.

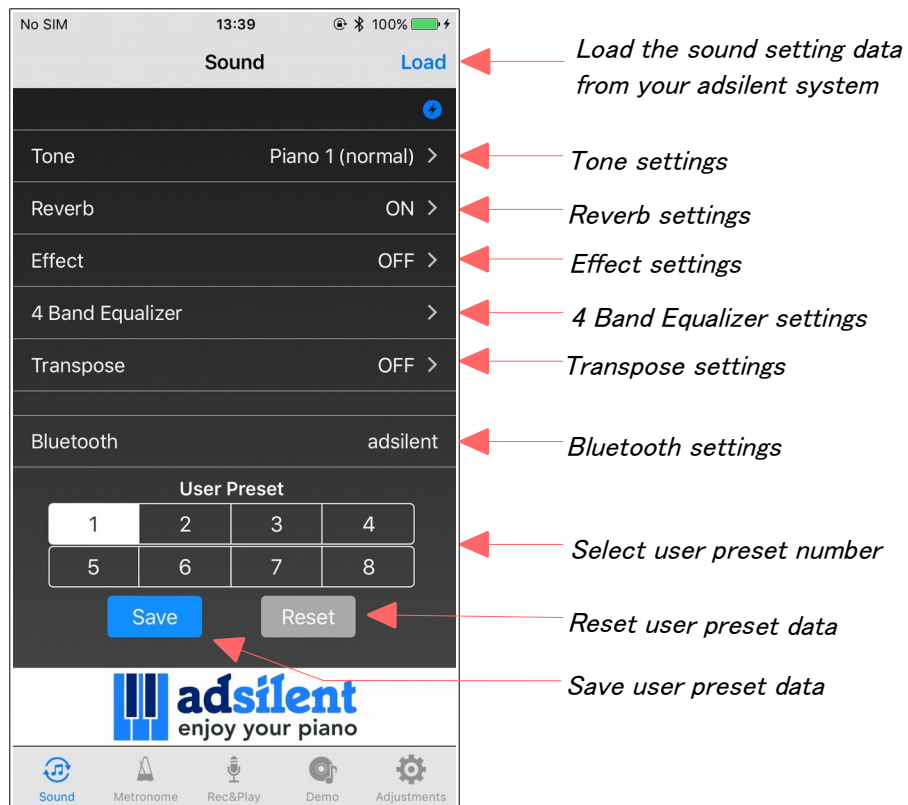


Usb connection is recognized automatically, but when using with usb connection, leave app bluetooth setting not connected.

2. Sound

Adjust the sound settings.

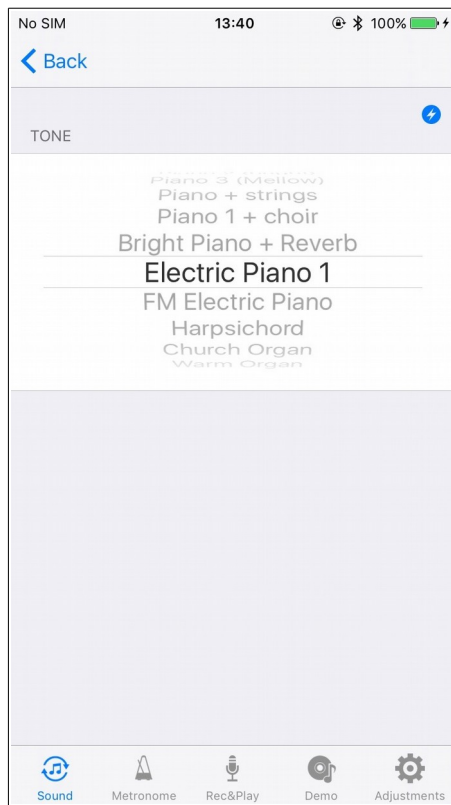
Settings for tone, reverb, effect, 4 band equalizer, and transpose can be found on this screen.



2.1. Tone

Select the tone.

You can select from 88 different tones.

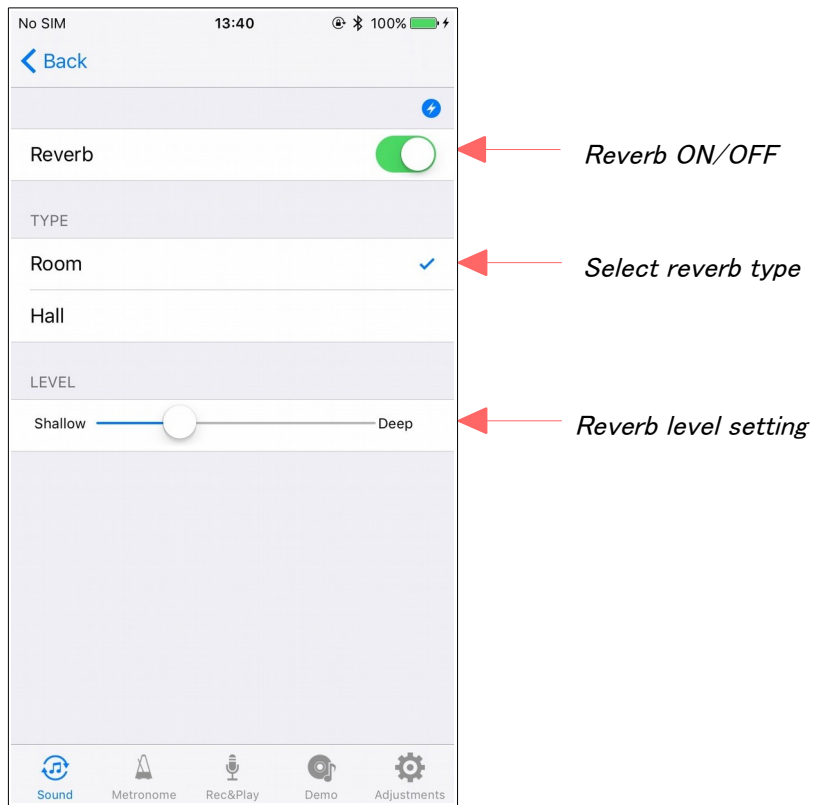


Highlight to select tone

2.2. Reverb

Set the reverb.

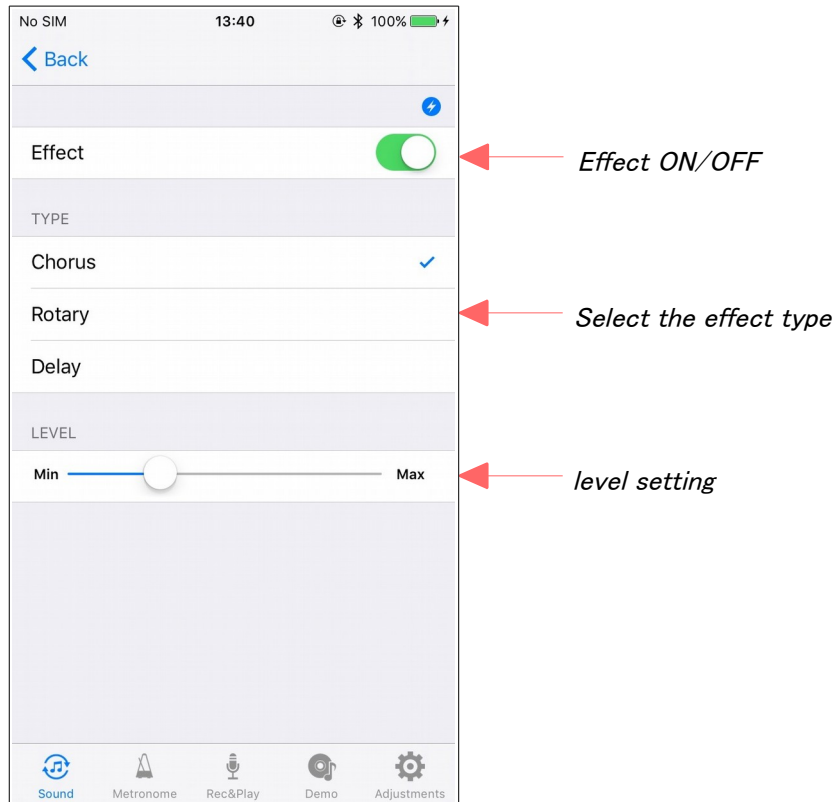
Chose from either Room or Hall reverb and customize its depth.



2.3. Effect

Set the effect.

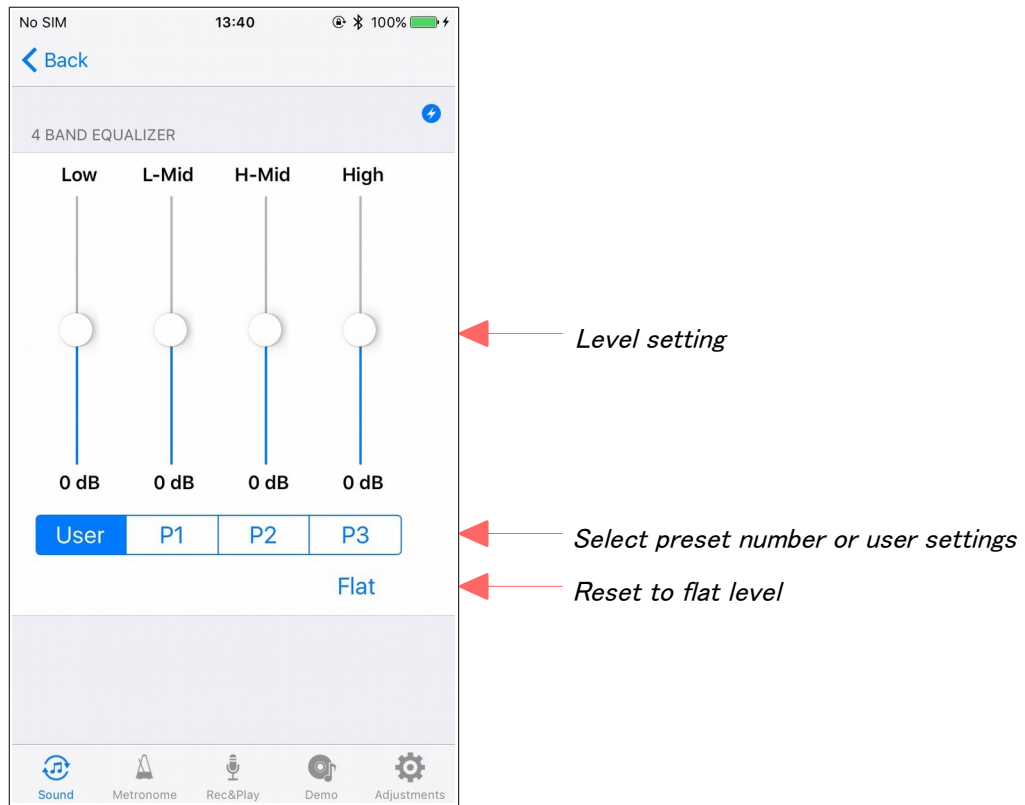
Choose from either Chorus, Rotary speaker, or Delay effects. The level cannot be adjusted when the rotary effect is selected.



2.4. 4 Band Equalizer

Set the 4 band equalizer.

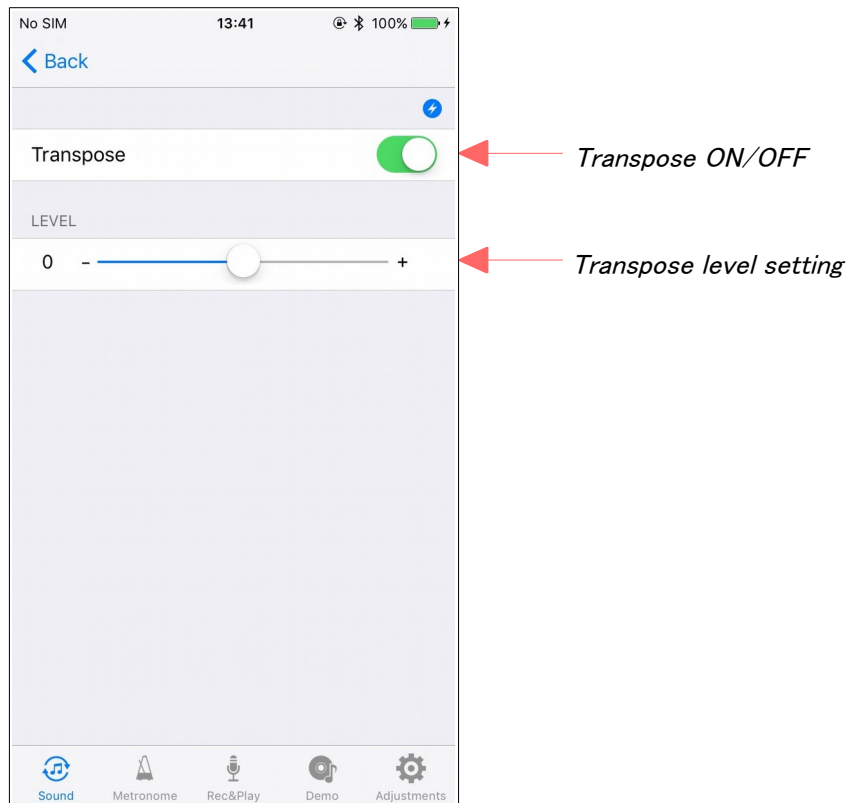
Three preset patterns and user settings are possible.



2.5. Transpose

Set the transpose.

Note: it is possible to transpose by +/- 2 octaves.

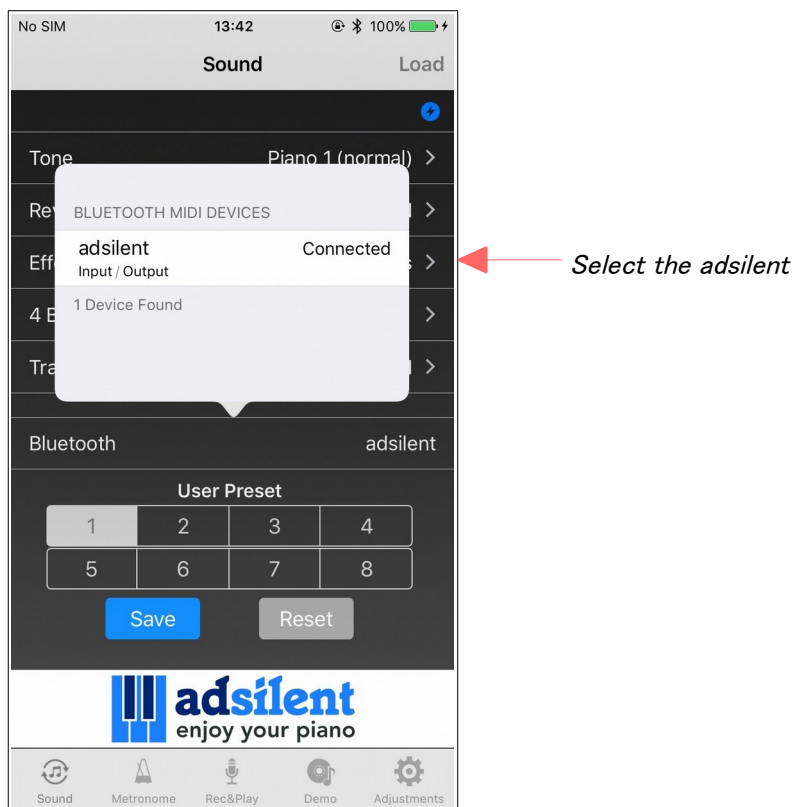


2.6. Bluetooth

Set the Bluetooth.

Select the adsilent system from the list of Bluetooth midi devices.

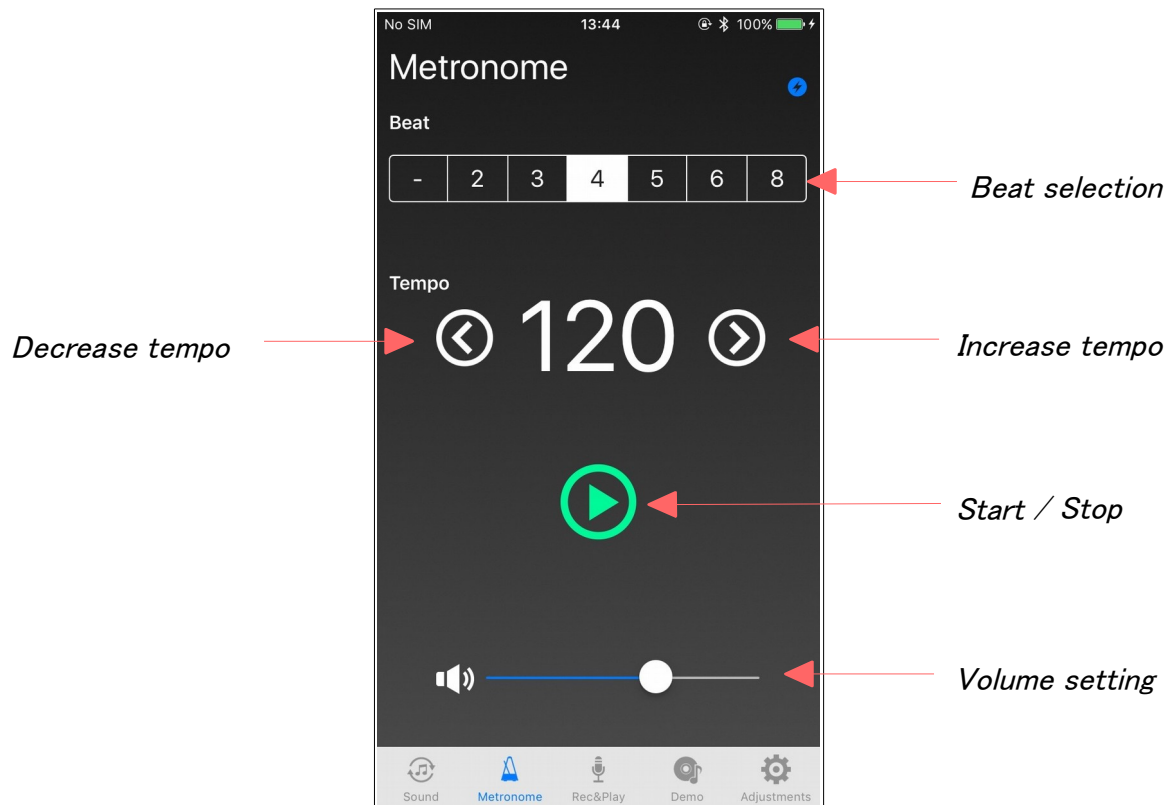
When connecting with Bluetooth, on iOS device, go to Settings> Bluetooth and make sure Bluetooth is on.



3. Metronome

The metronome can be customized with the following settings:

- Beat: None, 2, 3, 4, 5, 6, 8
- Tempo: 30 – 250
- Volume: 12 levels

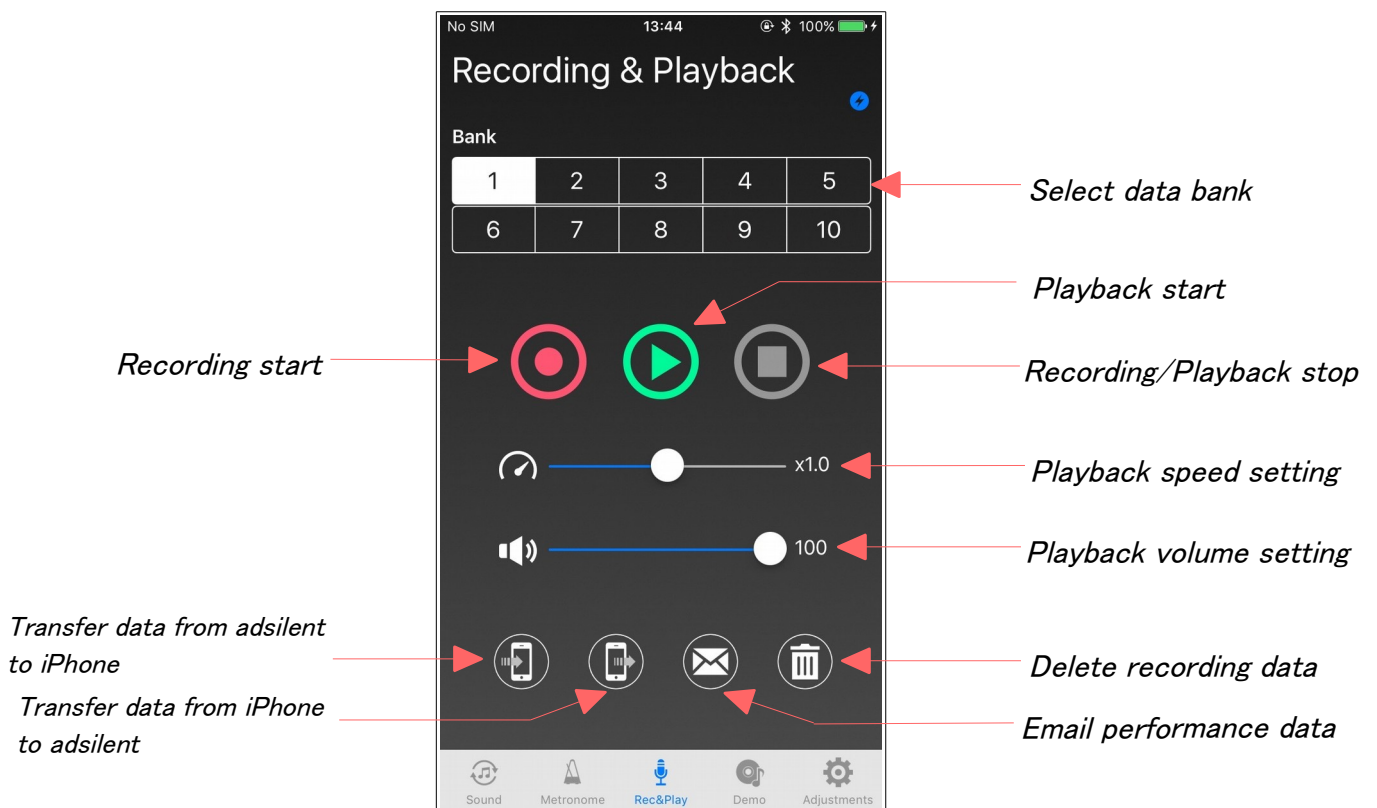


4. Recording & Playback

Control performance data recording and playback on this screen.

You can send the performance data saved on your adsilent system to your iPhone, as well as send new performance data from your iPhone and play it back on your adsilent system. It is also possible to email your performance data from this screen. Note that you will need to set up an email account beforehand.

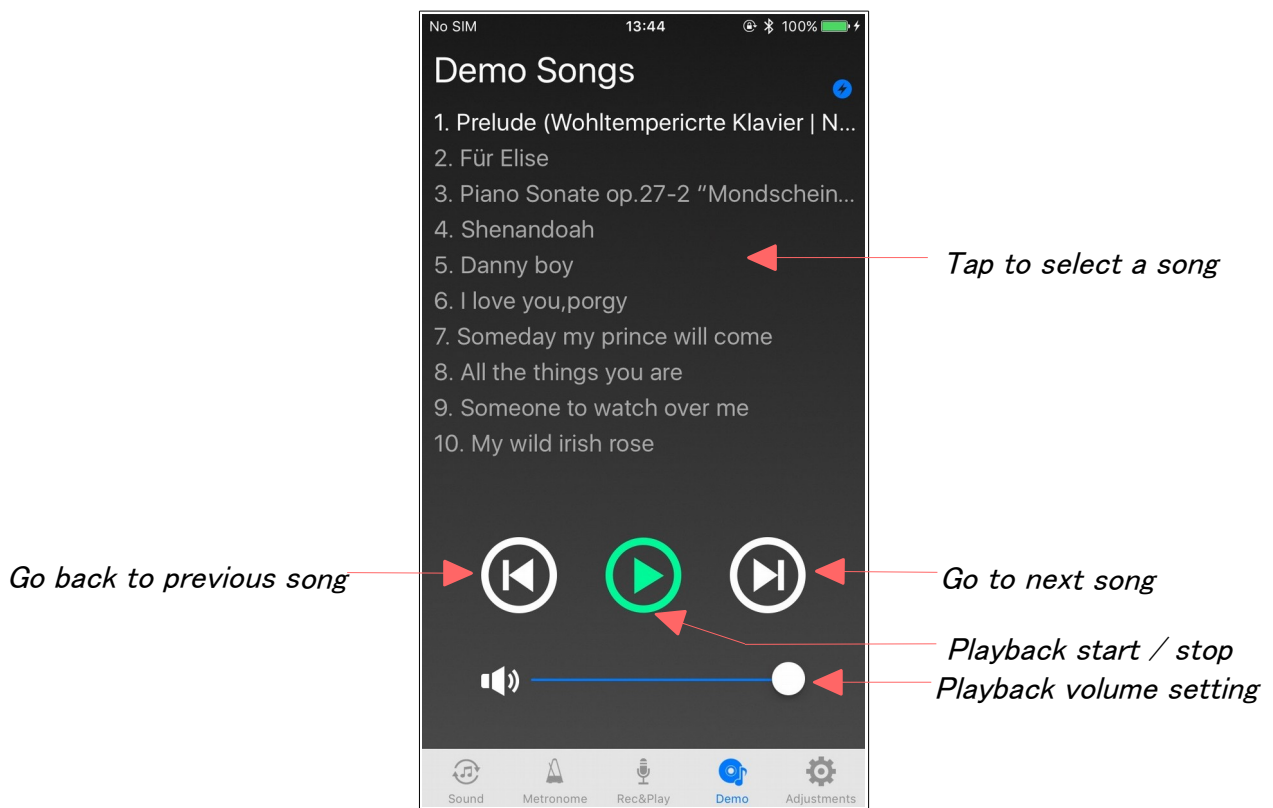
During playback, playback speed and volume is variable.



5. Demo Songs

Play demonstration songs.

Choose from 10 different demo songs that are stored on your adsilent system.



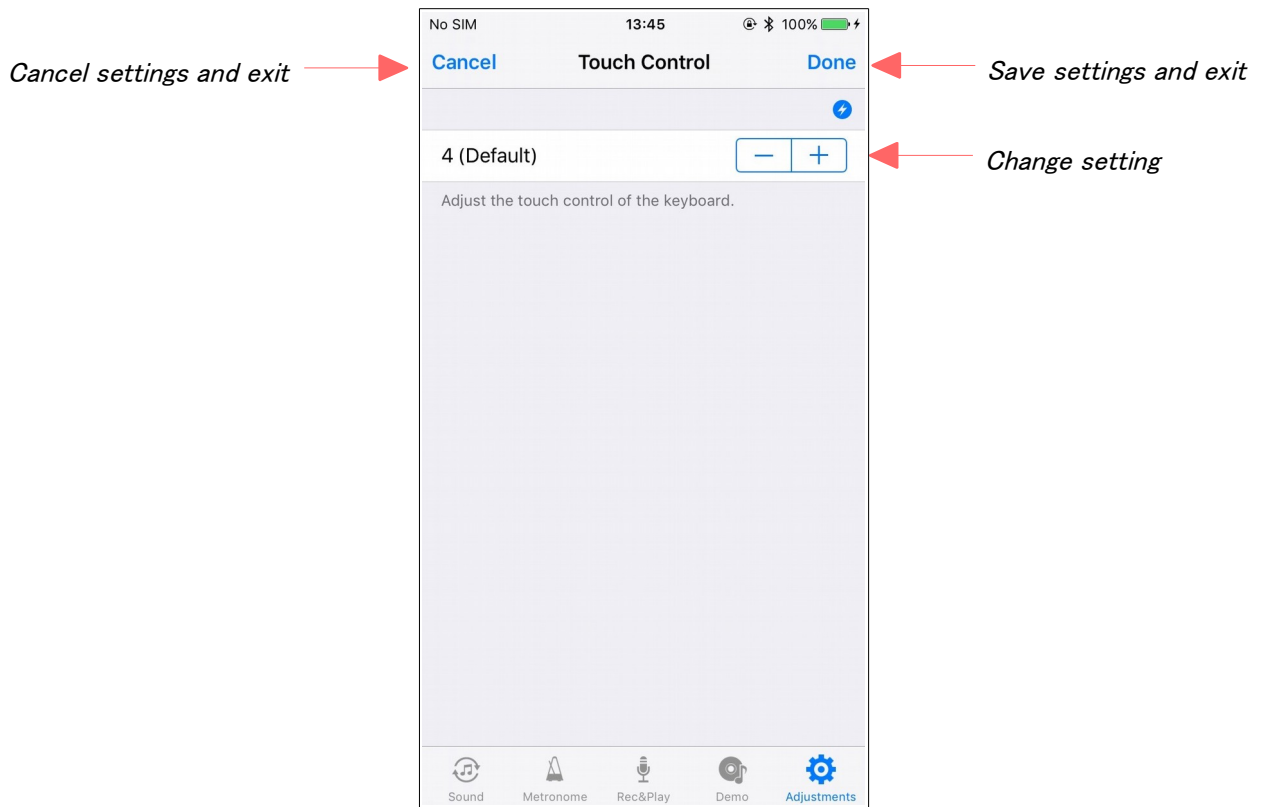
6. Adjustments

Adjust various functions of the adsilent system.



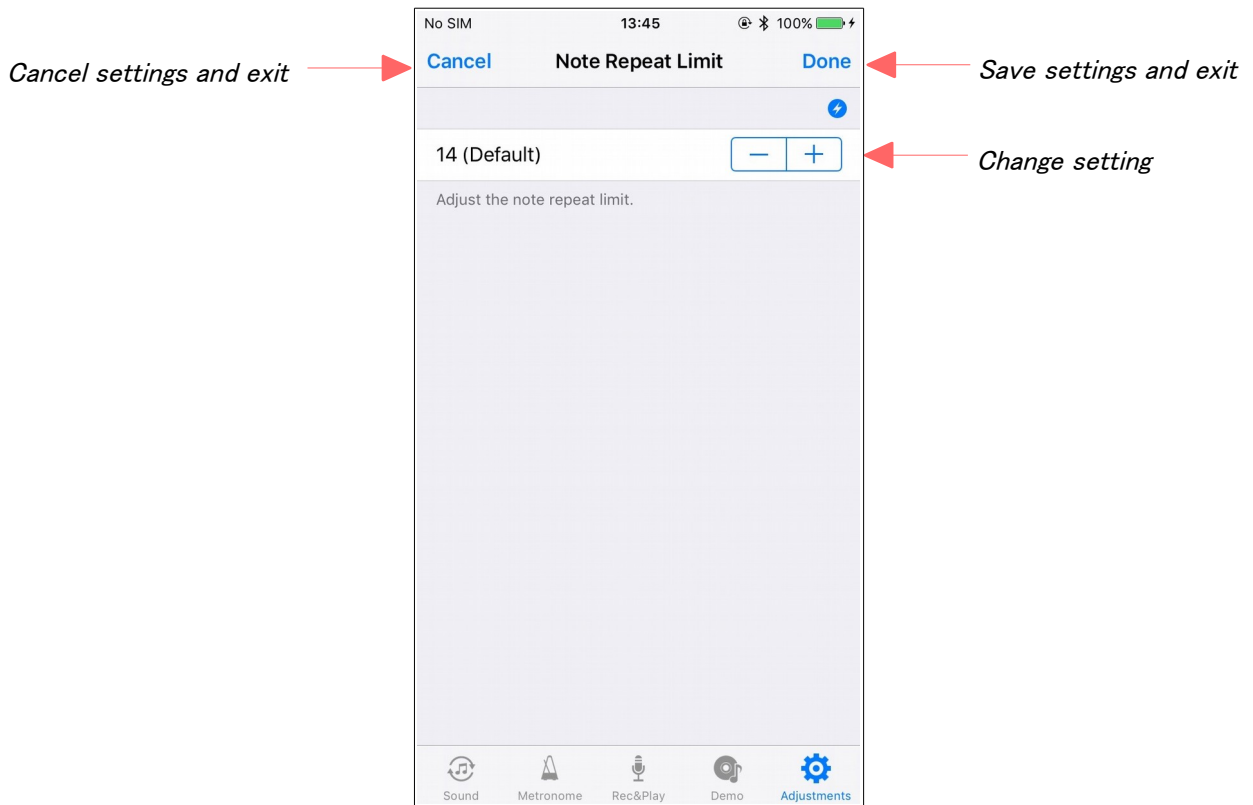
6.1. Touch Control

Adjust the key touch.



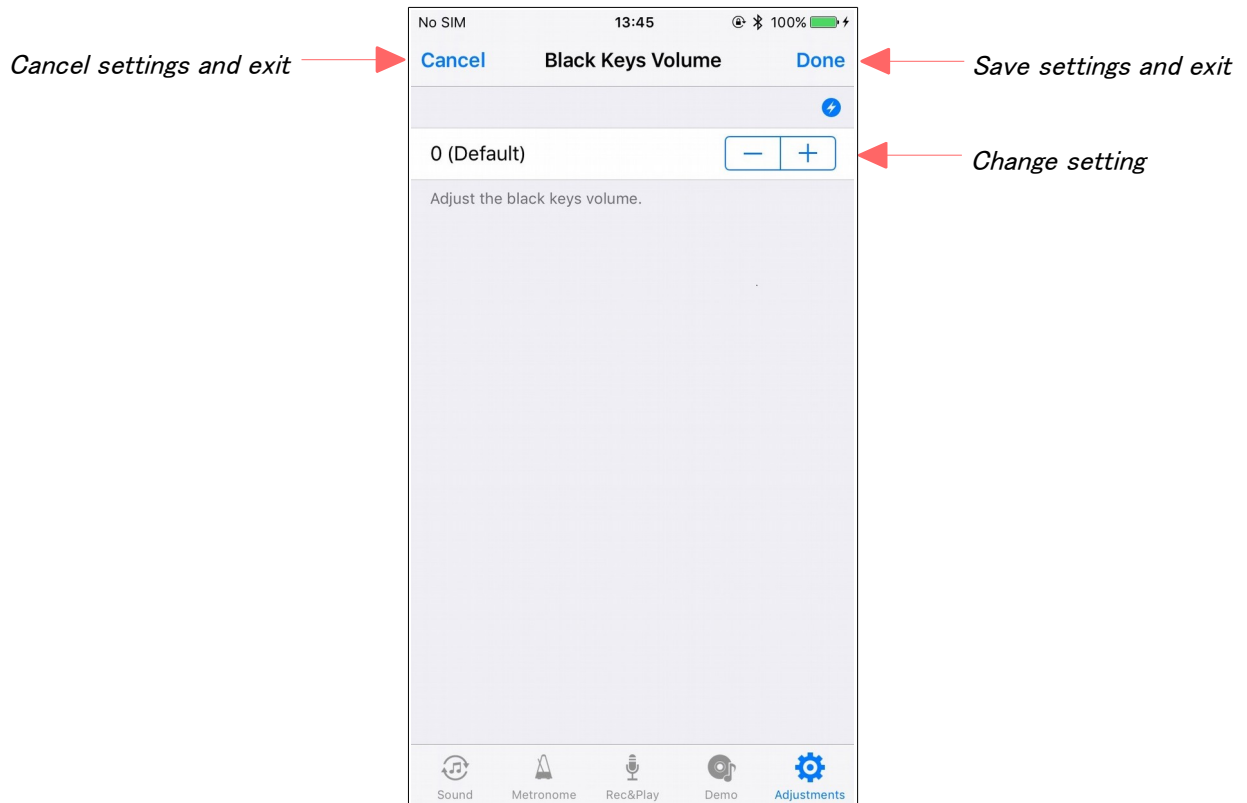
6.2. Note Repeat Limit

Adjust the number of the notes repeated by a key.



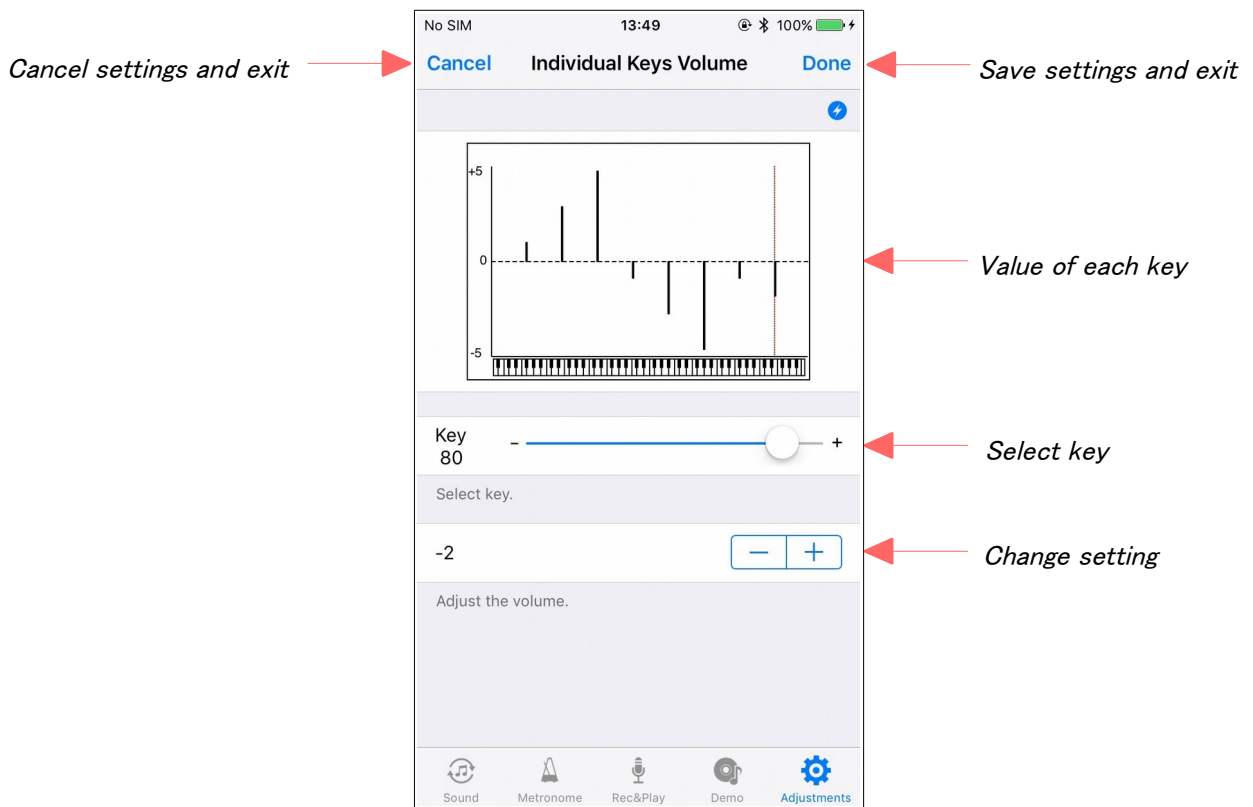
6.3. Black Keys Volume

Adjust the black keys volume.



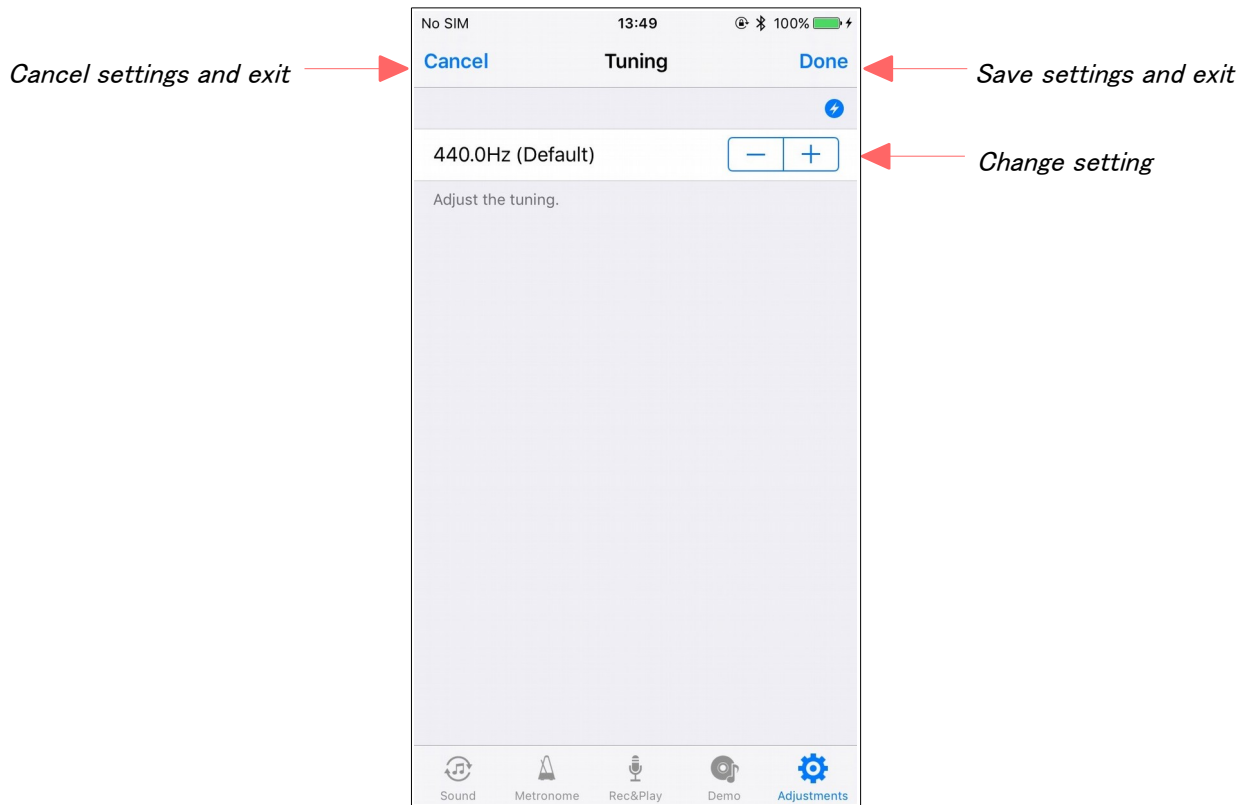
6.4. Individual Keys Volume

Adjust the volume for individual keys.



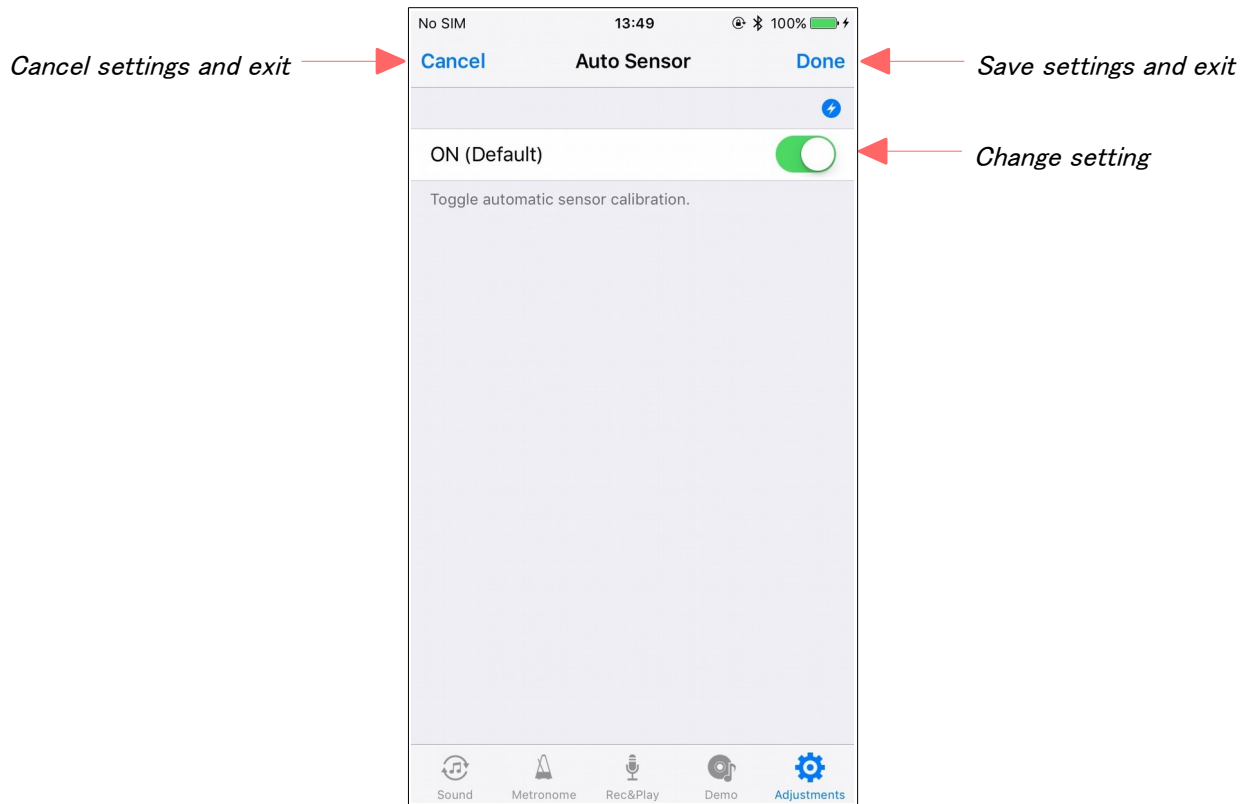
6.5. Tuning

Adjust the Tuning.



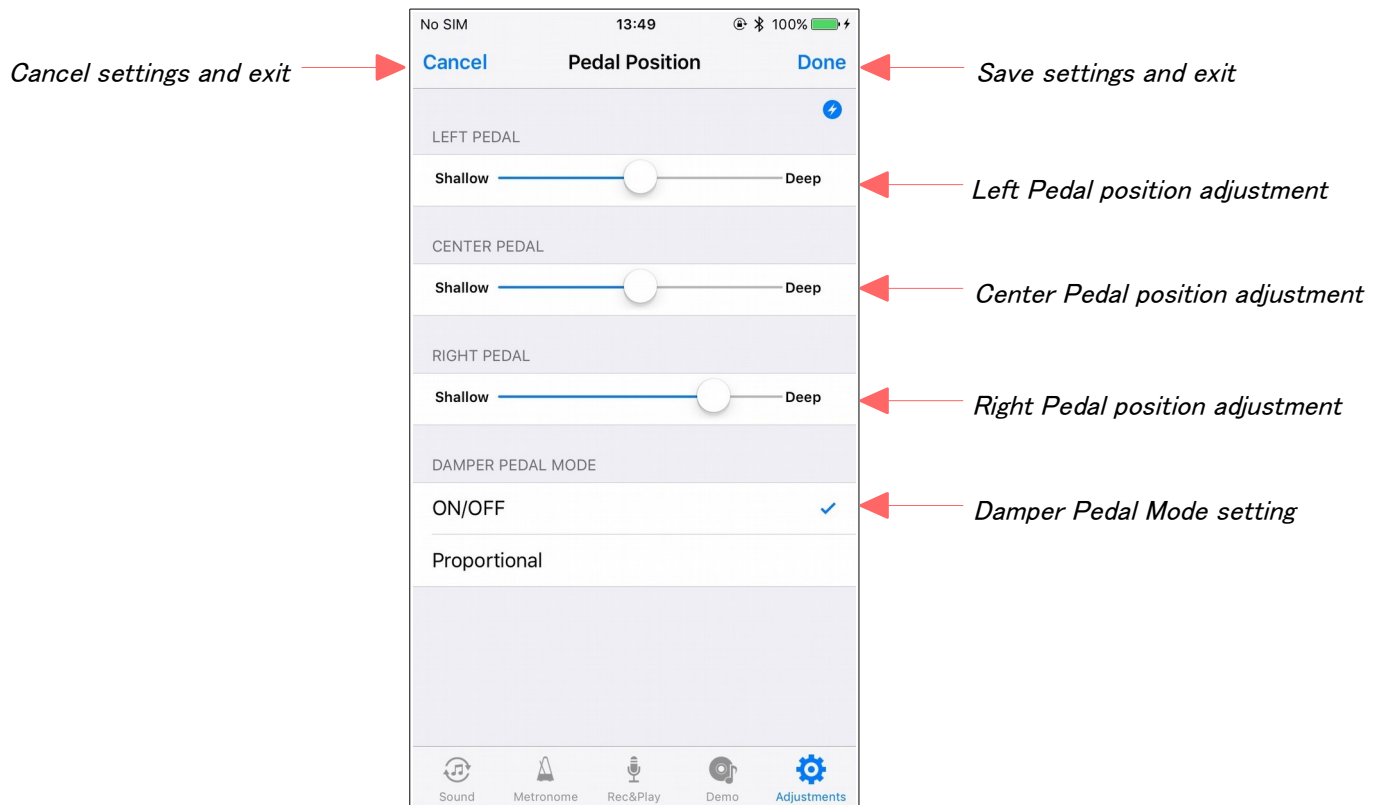
6.6. Auto Sensor

Set sensor auto calibration.



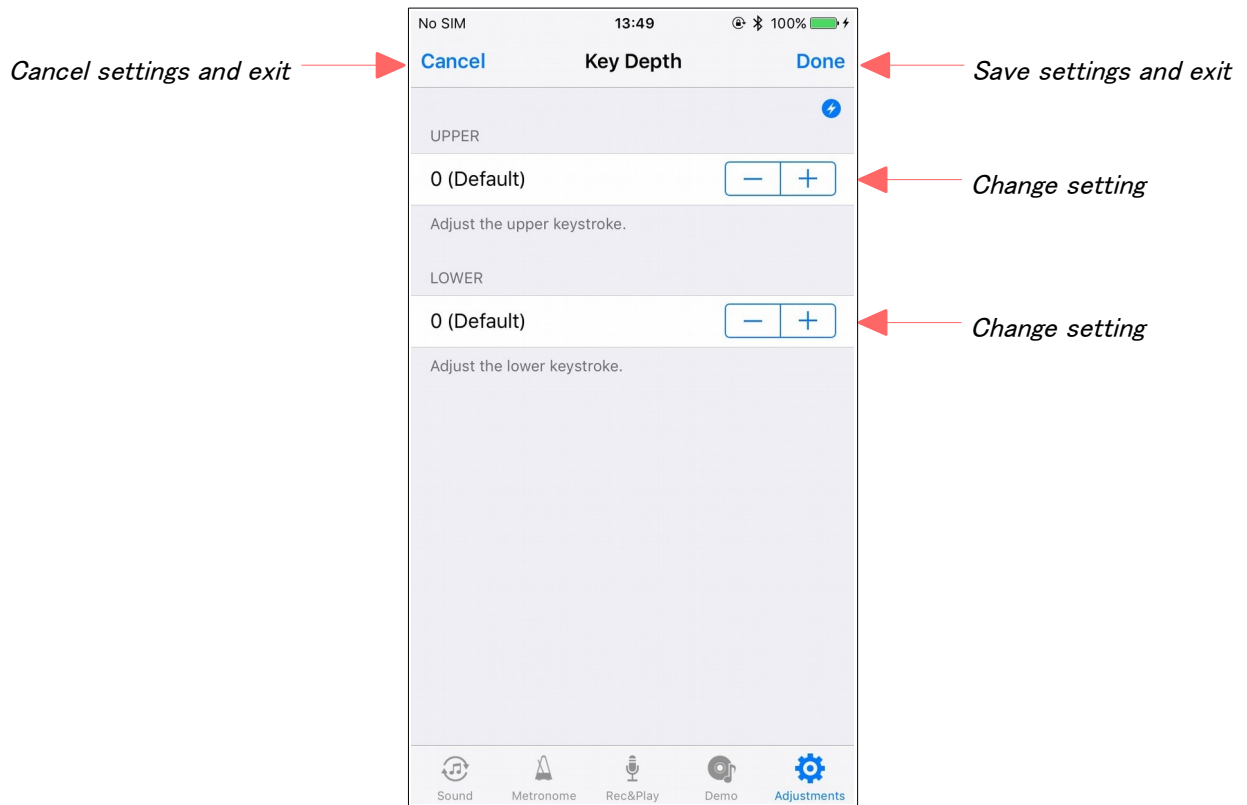
6.7. Pedal Position

Adjust the pedal detection position and damper pedal mode.



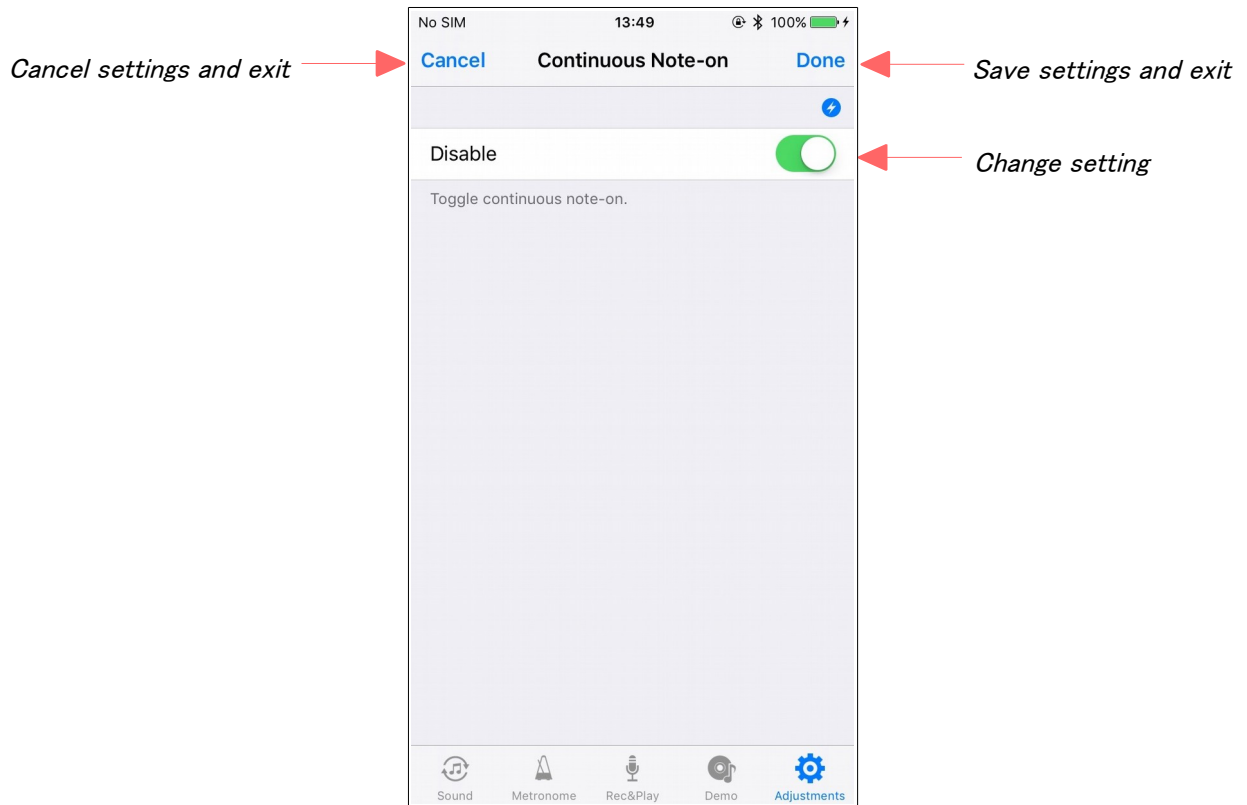
6.8. Key Depth

Adjust the key depth.



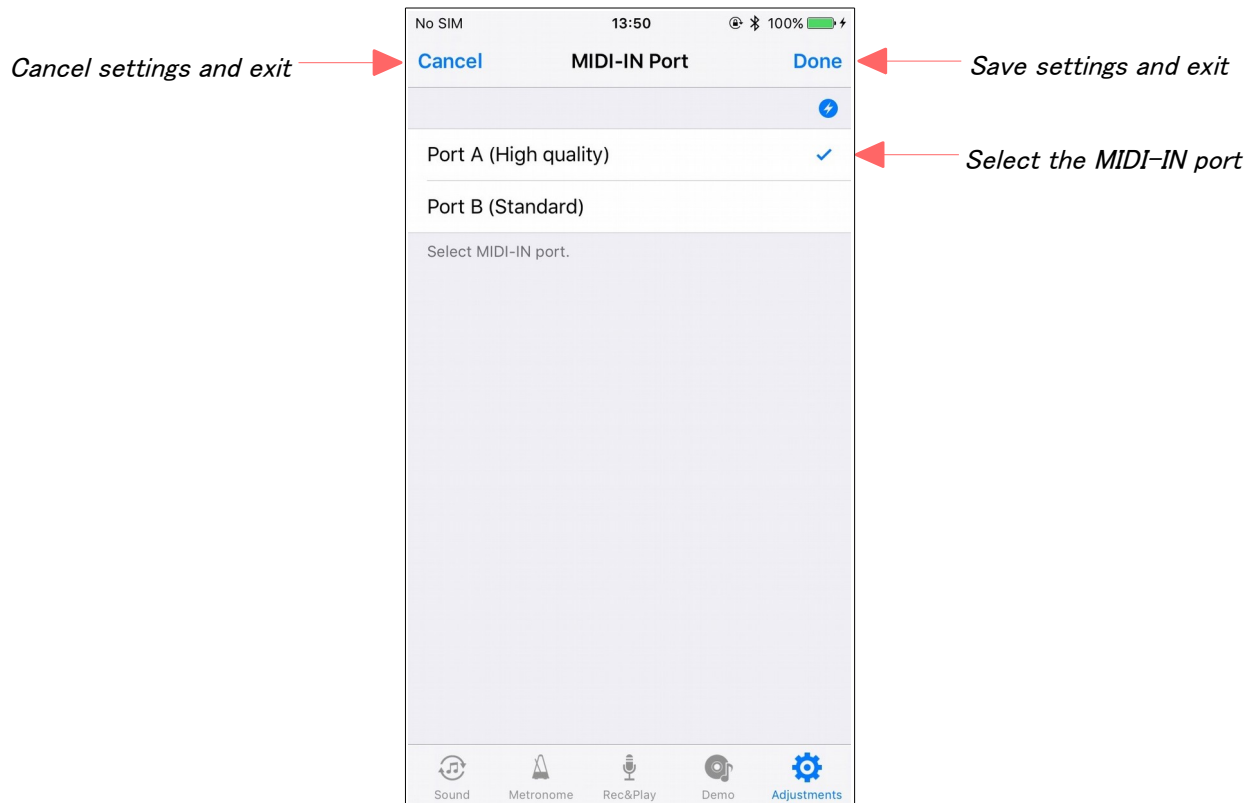
6.9. Continuous Note-on

Adjust the continuous note-on setting.



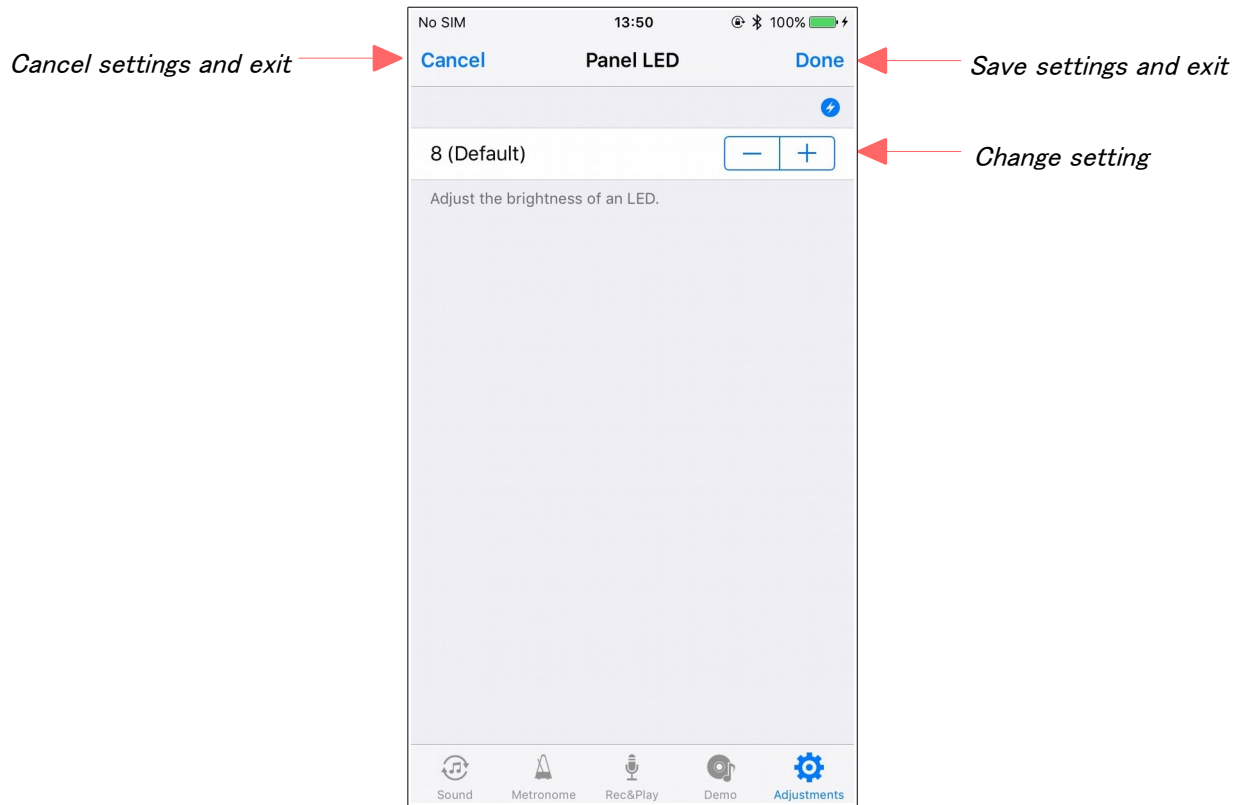
6.10. MIDI-IN Port

Select the MIDI-IN port.



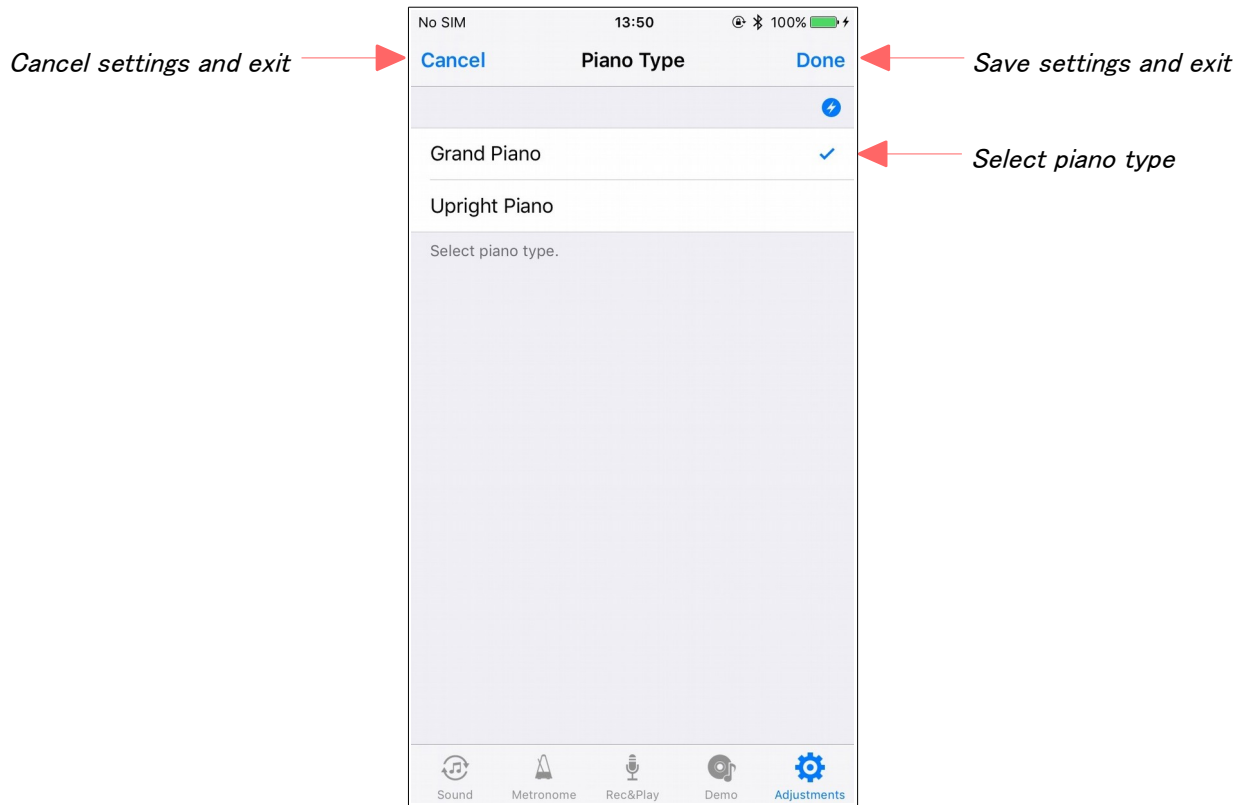
6.11. Panel LED

Adjust the Brightness of Panel LED.



6.12. Piano Type

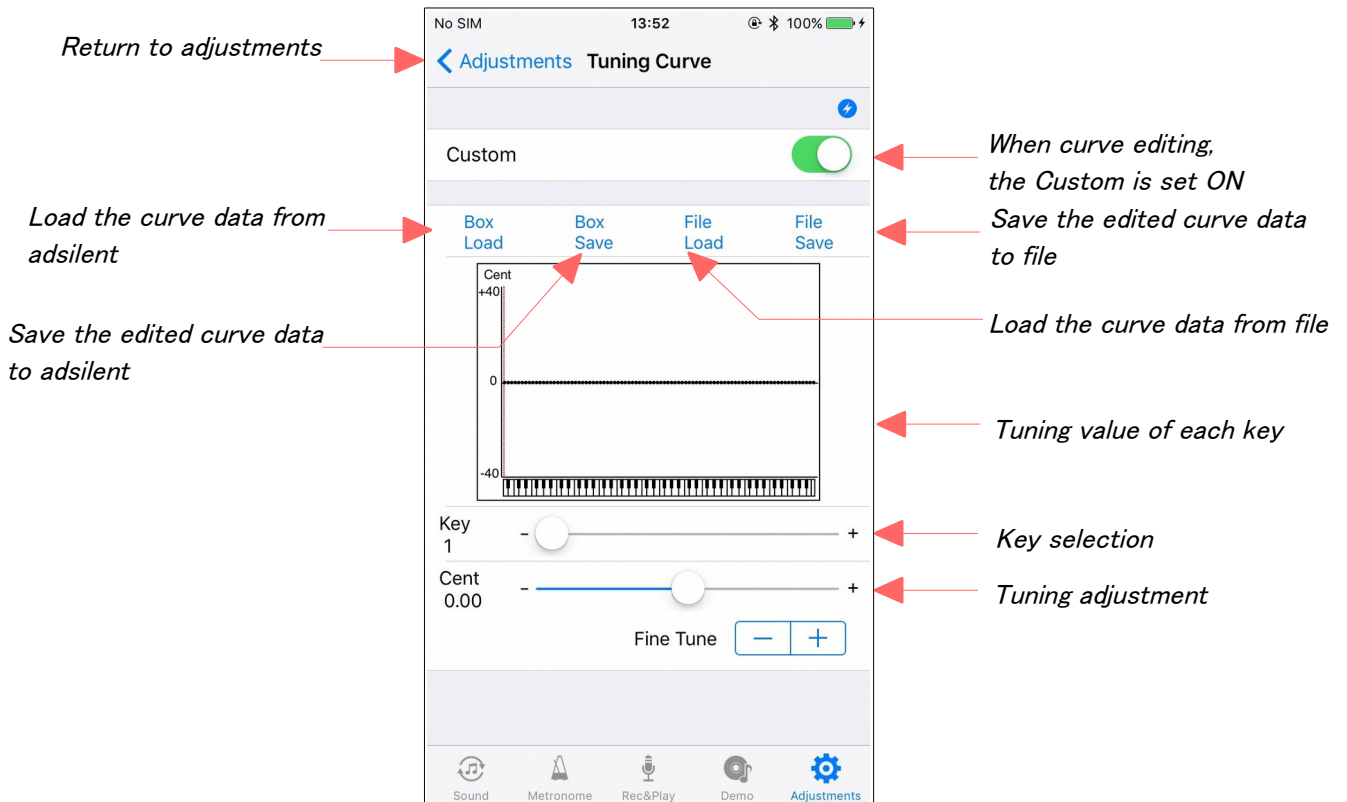
Adjust the piano type.



6.13. Tuning Curve

It is possible to edit a tuning curve.

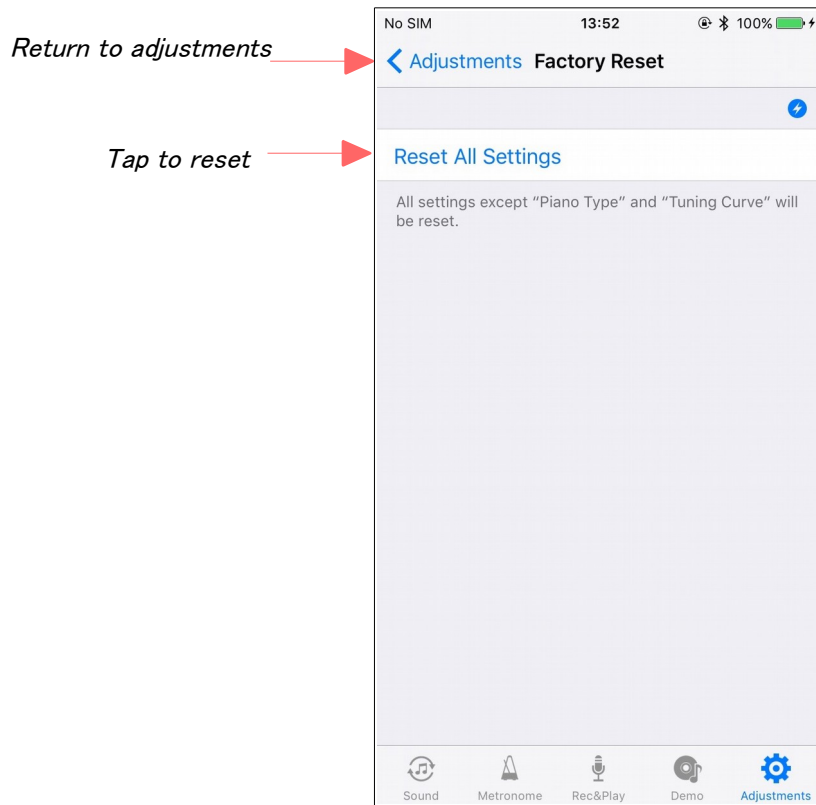
The edited tuning curve data is stored in the adsilent system, however you can save it to your iPhone as well.



6.14. Factory Reset

Reset all the settings of your adsilent system to the factory default.

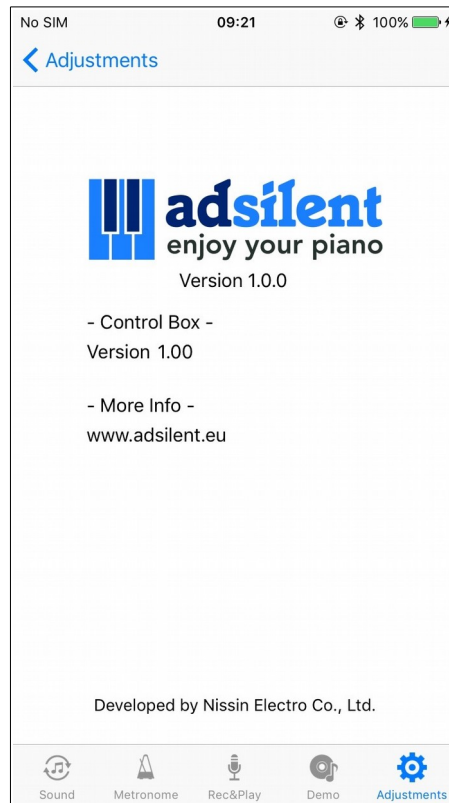
Note: the piano type and tuning curve will not be reset.



6.15. Info

Display the adsilent App information.

View the app version number on this screen.



Trademarks and Disclaimer

iPhone and iPad are registered trademarks of Apple Inc.

Other product and company names are registered trademarks or trademarks of their respective owners.

The contents of this manual are subject to change without notice.

This manual may not be reproduced, modified, or reprinted in any form, in whole or in part, without permission.

A. Duetz Handel & Service and Nissin Electro is not responsible for damages such as data loss with the use of this software.

© 2017 Nissin Electro Co., Ltd. All rights reserved